

PUNTATRICI A DISCESA RETTILINEA A MEDIA FREQUENZA  
MEDIUM FREQUENCY LINEAR ACTION SPOT WELDERS  
MITTELFREQUENZ PUNKTSCHWEISSMASCHINEN



PF136 *inverter* PF181 *inverter*

## CARATTERISTICHE PRINCIPALI

## MAIN FEATURES

## HAUPTMERKMALE



- Ü Alimentazione trifase
- Ü Regolazione a corrente costante
- Ü Migliore estetica del punto di saldatura
- Ü Consumo energetico ridotto
- Ü Lunga durata degli elettrodi

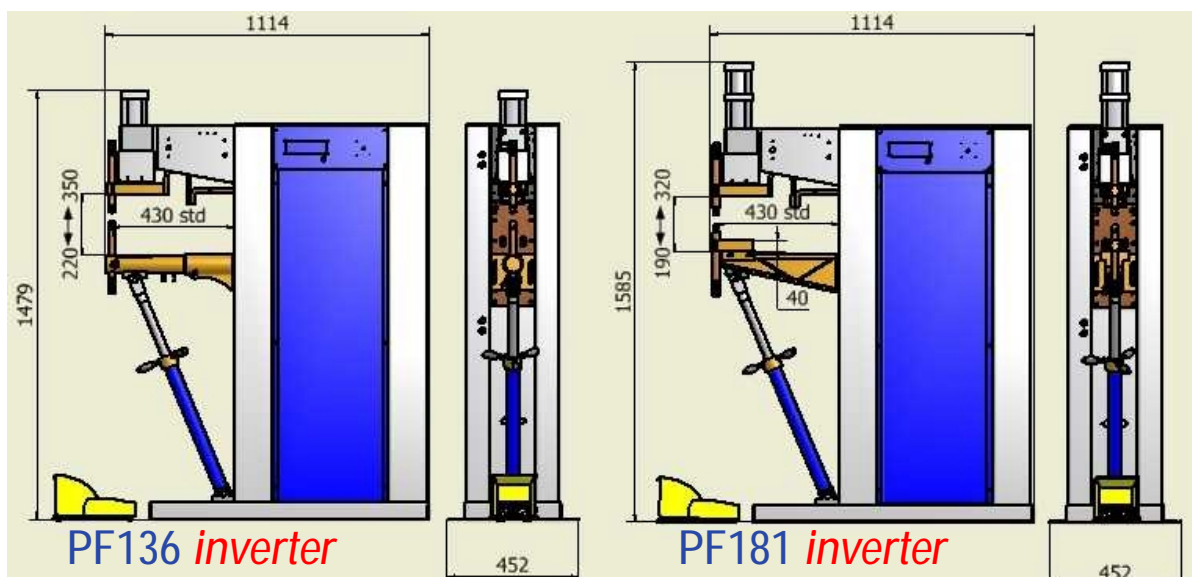
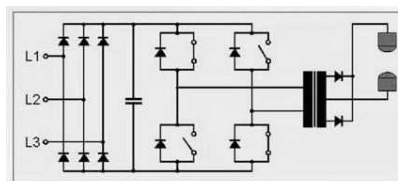
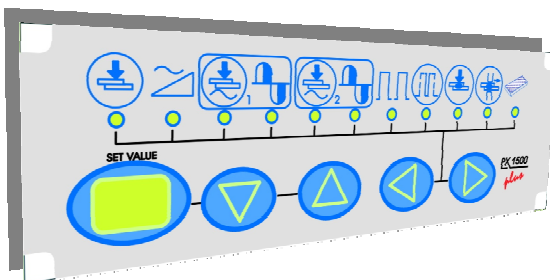


- Ü Three-phase power supply
- Ü Constant current regulation
- Ü Better spot weld appearance
- Ü Lower power demand
- Ü Longer electrodes life



- Ü Drei Fasen Stromversorgung
- Ü Konstante Stromregulierung
- Ü Besseres Aussehen der Schweißungen
- Ü Geringer Stromverbrauch
- Ü Lange Haltbarkeit der Elektroden

CARATTERISTICHE TECNICHE	TECHNICAL DATA	TECHNISCHE DATEN		PF 136	PF 181
Potenza nominale al 50%	Rated power at 50%	Nennleistung bei 50%	kVA	35	57
Potenza nominale al 20%	Rated power at 20%	Nennleistung bei 20%	kVA	55	90
Corrente massima di saldatura	Max. welding current	Max. Schweißstrom	kA	15	20
Tensione secondaria a vuoto	No-load sec. voltage	Sekundärspannung	V	7.5	8.3
Tensione di alimentazione trifase 50/60Hz	Three-phase input 50/60 Hz	Anschlußspannung 3-phasig 50/60 Hz	V	400	400
Fusibili ritardati	Fuse (delayed action)	Absicherung (träge)	A	32	63
Forza agli elettrodi	Electrodes force	Elektrodenkraft	daN	300	525



PE.I.-POINT si riserva il diritto di modificare le specifiche senza alcun preavviso  
 PE.I.-POINT reserve the right to modify specifications without prior notice  
 PE.I.-POINT behält sich das Recht die spezifischen ohne Benachrichtigung zu ändern vor



PE.I.-POINT srl  
 Via Martin Piva, 34  
 35010 Limena / Padova / Italy  
 Tel. +39 049 8840695 - Fax +39 049 8841129  
[info@pei-point.com](mailto:info@pei-point.com) - [www.pei-point.com](http://www.pei-point.com)