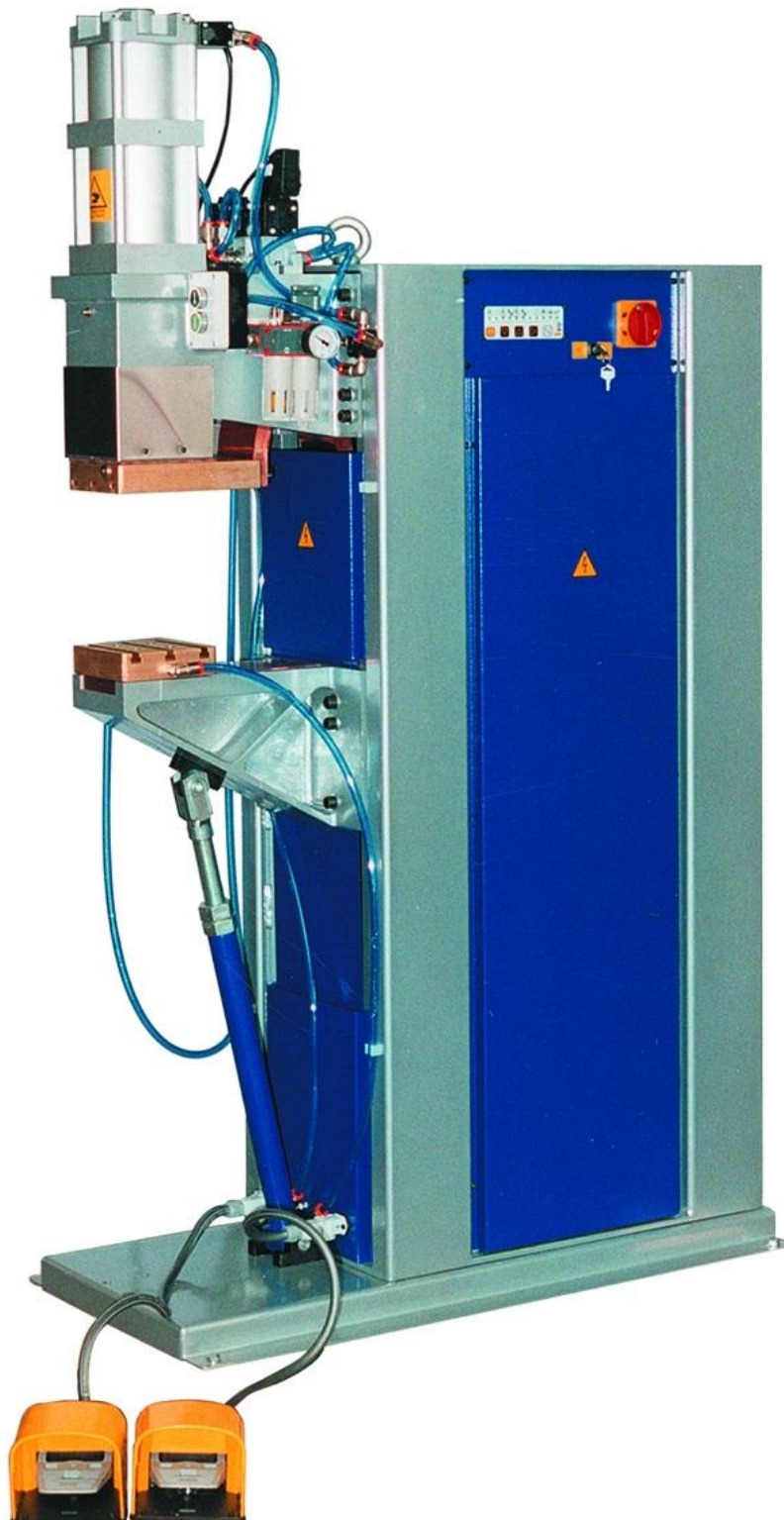


SALDATRICI A RESISTENZA A PUNTI E PROIEZIONE IN MEDIA FREQUENZA  
MEDIUM FREQUENCY SPOT AND PROJECTION WELDERS  
MITTELFREQUENZ PUNKT-BUCKELSCHWEISSMASCHINEN





- ü Alimentazione trifase
- ü Regolazione a corrente costante
- ü Migliore estetica del punto di saldatura
- ü Consumo energetico ridotto
- ü Lunga durata degli elettrodi



- ü Three-phase power supply
- ü Constant current regulation
- ü Better spot weld appearance
- ü Lower power demand
- ü Longer electrodes life



- ü Drei Fasen Stromversorgung
- ü Konstante Stromregulierung
- ü Besseres Aussehen der Schweißungen
- ü Geringer Stromverbrauch
- ü Lange Haltbarkeit der Elektroden

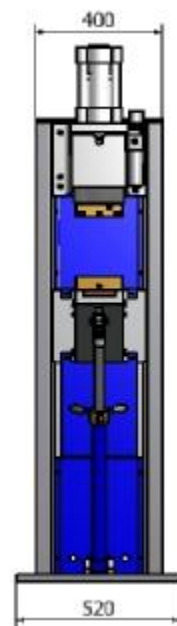
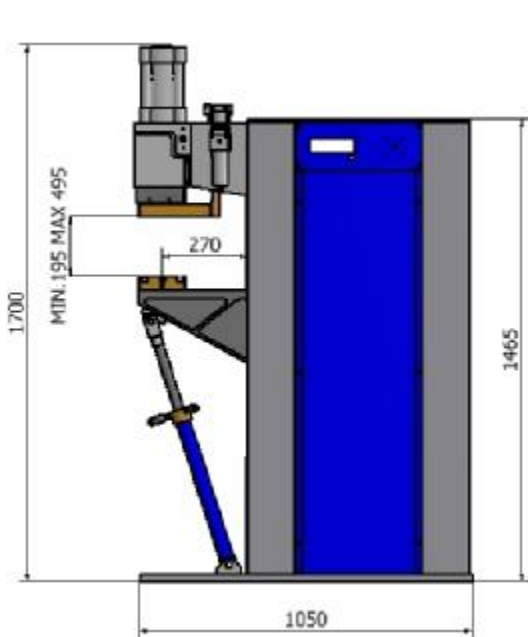
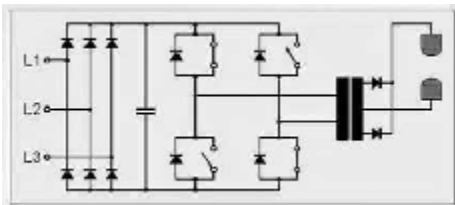
CARATTERISTICHE TECNICHE

TECHNICAL DATA

TECHNISCHE DATEN

PFP 181 PFP 281  
INVERTER INVERTER

Potenza nominale al 50%	Rated power at 50%	Nennleistung bei 50%	kVA	57	114
Potenza nominale al 20%	Rated power at 20%	Nennleistung bei 20%	kVA	90	180
Corrente massima di saldatura	Max. welding current	Max. Schweißstrom	kA	27	36
Tensione secondaria a vuoto	No-load sec. voltage	Sekundärspannung	V	8.4	10.5
Tensione di alimentazione trifase 50/60Hz	Three-phase input 50/60 Hz	Anschlußspannung 3-phasig 50/60 Hz	V	400	400
Fusibili ritardati	Fuse (delayed action)	Absicherung (träge)	A	63	100
Forza agli elettrodi	Electrodes force	Elektrodenkraft	daN	735	1200



P.E.I.-POINT si riserva il diritto di modificare le specifiche senza alcun preavviso  
 P.E.I.-POINT reserve the right to modify specifications without prior notice  
 P.E.I.-POINT behält sich das Recht die spezifischen ohne Benachrichtigung zu ändern vor